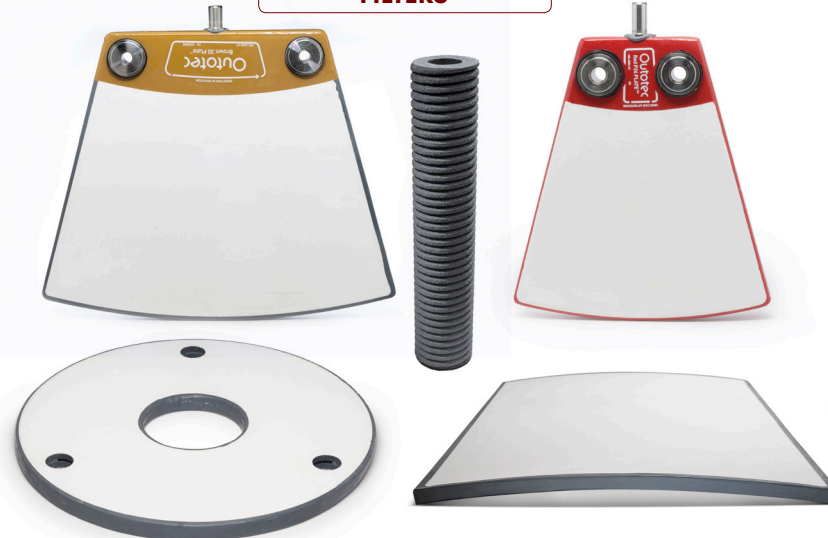


| | | AF | WAF | MeAF | SF | MF | SIL |
|---|-----------------------|------------|-------|--------------------|-----------|-----------|-------|
| Property | Test Method | | | | | | |
| Color | | Light Gray | White | White / Light Gray | Dark Gray | White | White |
| Chemistry (%) | ICP & EDS | | | | | | |
| SiC | | --- | --- | --- | 84 | --- | --- |
| SiO ₂ | | 8 | 7 | 8 | --- | 30 | 97.5 |
| Al ₂ O ₃ | | 87 | 91 | 87 | 13 | 69 | 1.5 |
| Other | | 5 | 2 | 5 | 3 | 1 | 1 |
| Density (g/cc) | ASTM C-373 | 2.1 | 2.1 | 2.1 | 1.8 | 2.1 | 1.7 |
| Modulus of Rupture 3 pt. MOR (MPa) | | | | | | | |
| RT | ASTM C-583 | 26 | 25 | 26 | 26 | 19-28 | 7-12 |
| 400°C | ASTM C-583 | 26 | 26 | 26 | 31 | 20 | n/a |
| 800°C | ASTM C-583 | 23 | 23 | 23 | 30 | 16 | n/a |
| 1200°C | ASTM C-583 | --- | --- | --- | 14 | 13 | n/a |
| Porosity (%) | Based on Bulk Density | 43 | 43 | 43 | 39 | 32 | 35 |
| Coefficient of Thermal Exp. X 10 ⁻⁶ /°C (RT-500°C) | ASTM C-372 | 8.8 | 8.8 | 8.8 | 4.0 | 5.4 | TBD |
| Maximum Material Use Limit (°C) | | 800 | 800 | 800 | 1200 | 1200 | TBD |
| Thermal Shock Resistance | N/A | Good | Good | Good | Excellent | Excellent | Good |

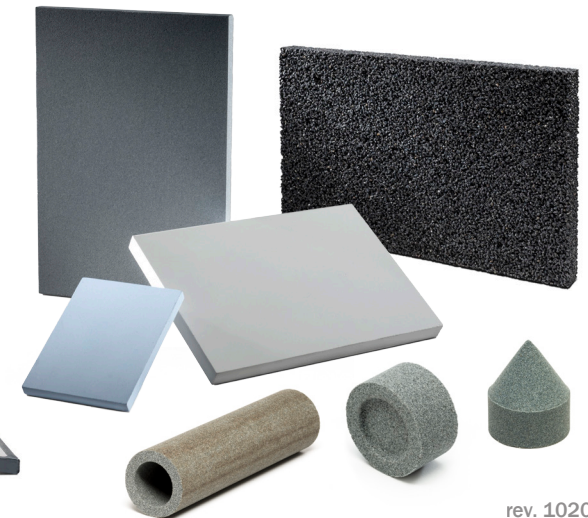
DIFFUSERS



FILTERS



WICKS



rev. 102016